

# INVESTMENTexpo

**THE TRADE FAIR FOR REAL ESTATE ASSET MANAGERS AND INVESTORS**

10 and 11 September 2020 - Zoo Palast Berlin/Waldorf Astoria Hotel

[www.investmentexpo.de](http://www.investmentexpo.de)

- with comprehensive hygiene concept -

Attention, new venue:  
**INVESTMENTexpo is coming to the cinema!**

**Zoo Palast Berlin**

Directly opposite the  
Waldorf Astoria Hotel.

Discussion  
Information  
Exhibition  
Dialogue

## PROGRAMME 2020

Advisory board of INVESTMENTexpo



Chairman of the Advisory Board: Professor Steffen Sebastian, IREBS



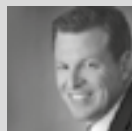
Hermann Aukamp, Consultant



Ingo Bofinger, AFIAA



Dirk Bratschke, Institutional Asset- and Portfolio Manager



Dr. Anton Buchhart, Barmenia Versicherungsgruppe



Christiane Eckert, former Chief Portfolio Manager, ATP Real Estate



Dr. Anja Hubig, Ostsächsische Sparkasse Dresden



Markus Königstein, R+V Versicherungsgruppe



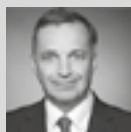
Joachim Kümme, Kreissparkasse Ludwigsburg



Dr. Helmut Matthey, Evangelische Ruhegehaltskasse in Darmstadt (ERK)



Karsten Müller-Uthoff, Consultant



Professor Dr. Ulrich Nack, EBZ Business School GmbH



Sascha Pinger, WPV



Thomas Rücker, RUECKERCONSULT GmbH



Jan Schlüter, Nordrheinische Ärzteversorgung

Climate Friendly Event

**atmosfair**



## PARTNERS

### AN EVENT BY



### GLOBAL CONFERENCE PARTNER



### PREMIUM PLATIN PARTNERS



### GOLD PARTNERS



### SILVER PARTNERS



### PRESENTER OF INVESTOR-PARTNER BRUNCH



### EXHIBITORS



### WORKSHOP PARTNERS



### MEDIA- AND ASSOCIATION PARTNERS



### INVESTMENTexpo

#### The trade fair for real estate asset managers and investors

**INVESTMENTexpo** is the forum and the initiative for real estate investors and asset managers when it comes to direct interaction, discussion, dialogue and obtaining information.

- **Obtain information** and **have discussions** in three conference rooms
- **Exhibition space**
- Large **meet & greet area** for networking
- Quiet **business lounge** for in-depth conversations

The absolute goals of **INVESTMENTexpo** are personal dialogue and information on markets, products, services and current topics in a short space of time.

**INVESTMENTexpo** is organised and supported by experienced market participants

### **Your health is important to us: The hygiene concept of INVESTMENT<sup>expo</sup>**

In order to offer all guests the greatest possible safety, we have worked out a comprehensive hygiene concept together with the Waldorf Astoria and the Zoo Palast, which we will adapt to current developments and legal requirements in the weeks leading up to the trade fair. We would like to outline the main features in the following:

#### **Equalisation of the use of lecture rooms and break areas**

- There will be a continuous programme in all rooms without „break times“. In this way, we avoid accumulations in the foyers, as is usually the case during breaks in conferences and meetings.
- Instead, we will provide „all day“ catering with snacks at the Zoo Palast and à la carte service at the ROCA Restaurant in the Waldorf Astoria Hotel directly across the street.
- So you decide when you want to fortify yourself.

#### **Distance and hygiene rules in the lecture rooms**

- The Zoo Palast has a coordinated seating concept for all lecture rooms (movie theatres), leaving sufficient space between the individual seats.
- The discussions and lectures will be transmitted from the three lecture rooms to different parts of the Zoo Palast foyer.

#### **Distance and hygiene rules on the break areas**

- We ask you to wear masks in the break rooms outside the dining room and away from conversation.

#### **Hygiene and safety for participants**

- Each participant receives mouth-nose masks from us to change.
- We will set up disinfection stands at various locations.

#### **Limitation on the number of participants and participants from non-EU countries**

- According to the current legal requirements of the State of Berlin, events with up to 300 participants are permitted from July 1, 500 participants from August 1 and 750 participants from September 1.
- Based on our hygiene concept, we have limited the number of participants to 340.
- As long as there are no further restrictions on entry, we will exclude the participation of persons from non-EU countries.
- Speakers from non-EU states and without residence within an EU state will be connected via online stream or with pre-recorded videos if possible.
- Furthermore, we are now offering virtual tickets and will broadcast the discussions and lectures from the three lecture rooms on the Internet.

**INVESTMENTexpo** is an initiative by **RUECKERCONSULT**, a leading consultant for communication at the interface of real estate and the real estate capital markets with significant expertise in designing and organising events.

**INVESTMENTexpo** is supported by an **Advisory Board** when it comes to designing the content of the event

- **Professor Steffen Sebastian**, Professor of Real Estate Finance, IREBS International Real Estate Business School, University of Regensburg (Chairman of the Advisory Board)
- **Hermann Aukamp**, consultant
- **Ingo Bofinger**, AFIAA Foundation for International Real Estate Investments
- **Dirk Bratschke**, Institutional Asset- and Portfolio Manager
- **Dr Anton Buchhart**, Barmenia Versicherungsgruppe
- **Christiane Eckert**, former Chief Portfolio Manager, ATP Real Estate
- **Dr Anja Hubig**, Ostsächsische Sparkasse Dresden
- **Markus Königstein**, R+V Versicherungsgruppe
- **Joachim Kumme**, Kreissparkasse Ludwigsburg
- **Dr Helmut Matthey**, Evangelische Ruhegehaltskasse (ERK)
- **Karsten Müller-Uthoff**, consultant
- **Professor Ulrich Nack**, EBZ Business School GmbH
- **Sascha Pinger**, Versorgungswerk der Wirtschaftsprüfer und der vereidigten Buchprüfer im Lande Nordrhein-Westfalen (WPV)
- **Thomas Rücker**, RUECKERCONSULT GmbH
- **Jan Schlüter**, Nordrheinische Ärzteversorgung (NAEV)

**INVESTMENTexpo offers institutional investors free attendance including two overnight stays**

**INVESTMENTexpo is the platform for asset managers and service providers to present their expertise to a broad audience via partnerships**

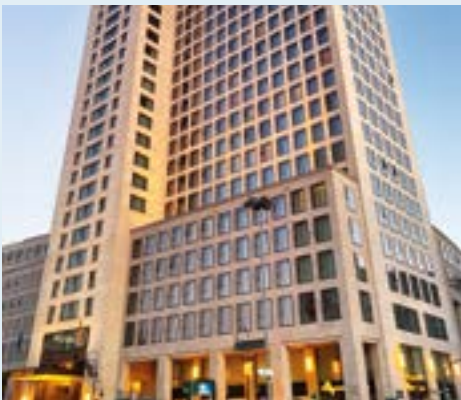
### Who should take part in INVESTMENTexpo?

- **Public and private alternative investment funds (AIFs):** real estate investment and asset managers, REITs, real estate AGs
- **Institutional investors:** insurers, pension plans, pension funds, pension schemes, supplementary pension funds, foundations, proprietary securities portfolio managers
- **Service providers and lawyers:** Structurers, tax advisors, auditors, lawyers, servicers, evaluators, custodians, real estate brokers, asset managers, banks, providers of digitalisation solutions, property managers and software developers

### Our event locations - a special experience

**INVESTMENTexpo 2020 offers two attractions as conference venues directly opposite each other:**

The **Waldorf Astoria Hotel** with à la carte daytime restaurant for all **INVESTMENTexpo** guests and as the venue for the evening reception on September 10, 2020.



The historic **Zoo Palast** directly opposite as a conference location. We have decided to move the conference part into the larger Zoo Palast so that we can provide even more space and distance.





### About the Waldorf Astoria

**The Waldorf Astoria Berlin is ideally located in the heart of Berlin's City West, directly at the famous memorial church and in direct proximity to the Kurfürstendamm.**

Incomparable design and exciting views over the capital are the outstanding attributes of the hotel. The Waldorf Astoria Berlin awaits you with a sophisticated atmosphere in modern Art Deco style. It architecturally continues the renaissance of the old western part - with a clear commitment to modernity. The Waldorf Astoria Berlin is located in the "Zoofenster Berlin". The 118-metre, 32-storey tower with plinth building by Christoph Mäckler Architects forms a counterpart to the Kaiser Wilhelm Memorial Church and is located in the immediate vicinity of the Zoologischer Garten and the railway line.

**Address:**

Waldorf Astoria Berlin  
Hardenbergstrasse 28  
10623 Berlin  
T +49 (0)30 814 000 - 2222  
[www.waldorfastoriaberlin.com](http://www.waldorfastoriaberlin.com)



“Life is like a box of chocolates. You never know what you’re gonna get.”

Tom Hanks in „Forrest Gump“

### About the Zoo Palast

**Like Forrest Gump, the varied history of the Zoo palace a box of chocolates.**

It all began in 1957. Located in the heart of Berlin, the newly built Zoo Palast quickly became the city’s most important cinema – and the home of the Berlinale. Great film premieres were celebrated here with numerous national and international stars such as James Stewart, Sophia Loren, Jodie Foster and Tom Hanks. The unique ambience of the cinema with its impressive oval ceiling, which looked like a starry sky thanks to spotlights and at the same time lit up the hall, enthused film stars and cineasts alike. From 1957 to 1999 the Zoo Palast was the central competition cinema of the Berlinale. At the end of November 2013, the Zoo Palast, which was elaborately and lovingly restored with great attention to detail under the direction of Berlin architect Anna Maske, was then reopened with a grand celebration – after a construction period of over two years. The new film palace continues its great history and offers its visitors a true Grand Cinema – a homage to the great times of the movie theatres of the 50s and 60s, whose atmosphere and stylish architecture cannot be found in new film theatres, is combined with the comfort of today’s premium cinemas.

#### Address:

Berlin Zoo Palast  
Hardenbergstrasse 29A  
10787 Berlin Charlottenburg  
Phone +49 (0) 180 5222 966  
[www.zoopalast.premiumkino.de](http://www.zoopalast.premiumkino.de)





The organizer reserves the right to change the program and the room layout.

### Information on discussions, lectures and breaks

We would like to draw your attention to the fact that there are no explicit break times due to the hygiene concept.

In all three lecture rooms, the lectures and discussions will therefore take place throughout the day. At the same time, in the foyer of the Zoo Palast and directly opposite in the „Roca“ Restaurant of the Waldorf Astoria Hotel, there will be a continuously varied range of food and drink available free of charge for all participants.

The aim of this measure is to avoid the accumulation of food and drink in the foyers during defined breaks.

So you decide for yourself when you want to strengthen yourself or have a conversation with other participants of the **INVESTMENTexpo**.

### Moderators

Warburg-HIH Invest Forum in Cinema Room 2: **Professor Dr Steffen Sebastian**, Chair of Real Estate Finance, IREBS Institute for Real Estate Economics

The Property Post Forum in cinema auditorium 3: **Markus Fischer**, management consultant

INTREAL Forum in cinema auditorium 4: **Goesta Ritschewald**, management consultant

## THURSDAY, 10 SEPTEMBER 2020

TIME	LOCATION	CONTENT
<b>WELCOME</b>		
<b>from 11:00 am</b>	Foyer Zoo Palast	Registration
<b>from 11:00 am</b>	Foyer Zoo Palast	Exhibition open

<b>FOOD AND DRINK</b>		
<b>from 11:00 am</b>	Foyer Zoo Palast and Zoo Loge	Meet & Greet with snacks and drinks
<b>from 12:30 am</b>	Waldorf Astoria, Restaurant "Roca"	Food and drink à la carte

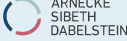
## PROGRAMME

TIME	LOCATION	TOPIC	CONTENT
<b>START</b>			
<b>12 noon - 12:15 pm</b>	Warburg-HIH Invest Forum (Cinema auditorium 2)	INVEST-MENTExpo	<p><b>Welcome</b>  <b>Professor Steffen Sebastian</b>, Professor of real estate financing, deputy managing director of the IREBS International Real Estate Business School  <b>Thomas Rücker</b>, CEO of RUECKERCONSULT GmbH</p> <p><b>Video transmission:</b> Foyer and all other forums (cinema halls)</p>
<b>12:15 pm - 12:30 pm</b>	Warburg-HIH Invest Forum (Cinema auditorium 2)	Networking	<p><b>Introduction</b> to the Conference App and Digital Voting  <b>Christian Stoschek</b>, Managing director, Dung Marketing GmbH &amp; Co KG</p> <p><b>Video transmission:</b> Foyer/forums (cinema halls)</p>
<b>12:35 pm - 1:05 pm</b>	Warburg-HIH Invest Forum (Cinema auditorium 2)	Investment markets	<p><b>Opening speech</b>  <b>The rocky path out of the COVID-19 crisis: Can monetary and fiscal policy help get the economy back on track for growth?</b>  <b>Stefan Schilbe</b>, Chief Economist Germany, Director, Co-Head Global Research Germany, Head of Economic Research Germany, HSBC Deutschland</p> <p><b>Video transmission:</b> Foyer/forums (cinema halls)</p>
<b>1:10 pm - 1:55 pm</b>	Warburg-HIH Invest Forum (Cinema auditorium 2)	Investment markets	<p><b>Discussion round</b>  <b>Which types of use and investment regions are the winners and losers in the COVID-19 crisis?</b>  Discussion led by <b>Karsten Jungk</b>, Managing director, Wüest Partner Deutschland, W&amp;P Immobilienberatung GmbH  <b>Dr Marian Berneburg</b>, Head of Real Estate and Financing Division, Provinzial Rheinland Versicherungen  <b>Thomas Kallenbrunnen</b>, Managing director, PGIM Real Estate Germany AG (Videostream)  <b>Alexander Eggert</b>, Managing director, Warburg-HIH Invest Real Estate GmbH</p>

## PROGRAMME

TIME	LOCATION	TOPIC	CONTENT
			<p><b>Professor Dr Ulrich Nack</b>, University lecturer for real estate management at the EBZ Business School in Bochum</p> <p><b>Professor Dr Gerd Merke</b>, Board of directors, Zusatzversorgungskasse des Steinmetz- und Steinbildhauerhandwerks VVaG</p> <p><b>Video transmission:</b> Foyer/forums (cinema halls)</p>
<b>FIRST BLOCK OF FORUMS</b>			
<b>2:00 pm - 2:45 pm</b>	Warburg-HIH Invest Forum (Cinema auditorium 2)	Investment markets	<p><b>Global cities and investment hubs: Which of Europe's metropolitan regions have stable growth prospects and represent attractive real estate markets for investments?</b></p> <p>Discussion led by <b>Prof. Dr Thomas Beyerle</b>, Managing director, Catella Property GmbH</p> <p><b>Christiane Eckert</b>, former Chief Portfolio Manager, ATP Real Estate (Videostream)</p> <p><b>Sebastiano Ferrante</b>, Head of Germany and Italy, PGIM Real Estate Germany AG (Videostream)</p> <p><b>Michael Keune</b>, Managing director, Catella Residential Investment Management GmbH</p> <p><b>Gerhard Lehner</b>, Managing director, Savills Investment Management GmbH</p>
<b>2:00 pm - 2:45 pm</b>	INTREAL Forum (Cinema auditorium 4)	Own securities accounts	<p><b>Challenge of own securities account management: Banks midway between financing institute and asset manager: the role of real estate in banks' asset allocation and a comparison of investment strategies</b></p> <p>Discussion led by <b>Carsten Demmler</b>, Head of Capital Management, Warburg-HIH Invest Real Estate GmbH</p> <p><b>Dr Anja Hubig</b>, Director Treasury, Ostsächsische Sparkasse Dresden</p> <p><b>Dr Joachim Köhne</b>, Head of Investments, Hamburger Sparkasse AG (Videostream)</p> <p><b>Joachim Kumme</b>, Head of department for own-account investments, Kreissparkasse Ludwigsburg</p>

## PROGRAMME

TIME	LOCATION	TOPIC	CONTENT
			<b>Florian Mundt</b> , Geschäftsführer, Deutsche Immobilien DI GmbH
<b>2:00 pm - 2:45 pm</b>	The Property Post Forum (Cinema auditorium 3)	Structure and processes	<p><b>Digitalisation of investment products: tokens and blockchain technology. What opportunities and structures are there for institutional real estate investment? A look into the future and what is already possible in regulatory terms?</b></p> <p><b>Speakers to be determined</b></p> <p>Presented by Arnecke Sibeth Dabelstein Rechtsanwälte Steuerberater Partnerschaftsgesellschaft mbB</p>  <p><b>Alexander Lehnen</b>, Partner, Arnecke Sibeth Dabelstein Rechtsanwälte Steuerberater Partnerschaftsgesellschaft mbB  <b>Dr Wolfgang Scholl</b>, Partner, Arnecke Sibeth Dabelstein Rechtsanwälte Steuerberater Partnerschaftsgesellschaft mbB</p>
<b>SECOND BLOCK OF FORUMS</b>			
<b>2:50 pm - 3:35 pm</b>	Warburg-HIH Invest Forum (Cinema auditorium 2)	Investment markets	<p><b>Global cities and investment hubs: The United Kingdom before, during and after Brexit - will office and residential investments in the UK remain attractive? A debate of the pros and cons.</b></p> <p>Discussion led by <b>Dirk Bratschke</b>, Institutional Asset- and Portfolio Manager  <b>Mahdi Mokrane</b>, Head of Investment Strategy &amp; Research, Patrizia AG  <b>Dr Carsten Loll</b>, LL.M., partner, Linklaters LLP.</p>
<b>2:50 pm - 3:35 pm</b>	INTREAL Forum (Cinema auditorium 4)	Depot A (Own securities accounts)	<p><b>Real estate investment by banks: regional and direct or national and indirect?</b></p> <p>Discussion led by <b>Dominik D.M. Barton</b>, CEO of the Barton Group  <b>Daniel Gerth</b>, Deposit manager, Sparkasse Mittelsachsen  <b>Joachim Kumme</b>, Head of department for own-account investments, Kreissparkasse Ludwigsburg</p>

## PROGRAMME

TIME	LOCATION	TOPIC	CONTENT
			<p><b>Jens-Dirk Meyer</b>, Director, Product Management Real Estate &amp; Alternative Investments, Helaba Invest Kapitalanlagegesellschaft mbH</p> <p><b>Thomas Pohlmann</b>, Head of Institutional Sales &amp; Investor Relations, BNP Paribas Real Estate Investment Management Germany GmbH</p> <p><b>Manfred Schmauser</b>, Head of trading and proprietary investments, Sparkasse Nürnberg</p>
<b>2:50 pm - 3:35 pm</b>	The Property Post Forum (Cinema auditorium 3)	Structure and processes	<p><b>The new RETT blocker: What does it mean for future share deal structures? Which structures are suitable for institutional investors?</b></p> <p><b>Dr Marie-Theres Rämmer</b>, Partner, DLA Piper UK LLP</p>
<b>THIRD BLOCK OF FORUMS</b>			
<b>3:40 pm - 4:25 pm</b>	Warburg-HIH Invest Forum (Cinema auditorium 2)	Investment markets	<p><b>Global cities and investment hubs: Focus on Germany: types of use, locations and sites - how to keep generating attractive risk premiums in Germany?</b></p> <p><b>Impulse lecture and moderator:</b></p> <p><b>Dr Jan Linsin</b>, Managing director, Head of Research, CBRE GmbH</p> <p><b>Michael Amann</b>, Managing director, Becken Invest GmbH</p> <p><b>Enver Büyükarlan</b>, Shareholder, Deutsche Investment KVG</p> <p><b>Dr Helmut Matthey</b>, Management Board Spokesperson, Evangelische Ruhegehaltsskasse in Darmstadt (ERK)</p> <p><b>Jan Schlüter</b>, Head of real estate department, Nordrheinische Ärzteversorgung</p>
<b>3:40 pm - 4:25 pm</b>	INTREAL Forum (Cinema auditorium 4)	Liquid investments	<p><b>Liquid or illiquid real estate investments: what risk premiums need to be generated from an investor's perspective? What is the role of ratings, investment grades and securities prospectuses?</b></p>

## PROGRAMME

TIME	LOCATION	TOPIC	CONTENT
<b>3:40 pm - 4:25 pm</b>	INTREAL Forum (Cinema auditorium 4)	Liquid investments	<p>Discussion led by <b>Martin Eberhardt</b>, FRICS, Member of the RICS Governing Council (honorary)</p> <p>Keynote address: <b>Simon Mallison</b>, Executive Managing Director, Real Capital Analytics (Videostream)</p> <p><b>Dr Anton Buchhart</b>, Senior head of department for investments, Barmenia Versicherungsgruppe</p> <p><b>Martina Hertwig</b>, Partner, Certified Public Accountant, Tax Advisor, Baker Tilly GmbH &amp; Co. KG auditing company</p> <p><b>Markus Königstein</b>, Head of real estate and infrastructure, R+V Versicherungsgruppe</p>
<b>3:40 pm - 4:25 pm</b>	The Property Post Forum (Cinema auditorium 3)	Structure and processes	<p><b>Improved efficiency through digitization of the entire value chain - practical examples, methods, trends</b></p> <p>Discussion led by <b>Markus Fischer</b>, Management consultant</p> <p><b>Uwe Brodtmann</b>, Board of directors, Solutiance AG</p> <p><b>Thomas Krings</b>, Managing director, IRM Management Network GmbH</p> <p><b>Alexander Taft</b>, Managing director, Invesco Asset Management Deutschland GmbH</p> <p><b>Klaus Weinert</b>, Managing director, Control.IT Unternehmensberatung GmbH</p> <p><b>Jens Starkjohann</b>, Management Board, SemTrac Consulting AG</p>
<b>FOURTH BLOCK OF FORUMS</b>			
<b>4:30 pm - 5:15 pm</b>	Warburg-HIH Invest Forum (Cinema auditorium 2)	Investment markets	<p><b>Asset manager selection - make or buy: find the best manager for investment destinations and usage types - concepts, analysis, selection process, governance, alignment of interests through investment</b></p> <p>Discussion led by <b>Hermann Aukamp</b>, Management consultant</p> <p><b>Tobias Bockholt</b>, Senior Consultant, Willis Towers Watson GmbH</p> <p><b>Dr Anja Hubig</b>, Director Treasury, Ostsächsische Sparkasse Dresden</p>

## PROGRAMME

TIME	LOCATION	TOPIC	CONTENT
			<p><b>Susanne Klaußner</b>, MRICS, Management, DIR Deutsche Investment Retail GmbH</p> <p><b>Sascha Pinger</b>, Managing Director, Pension Fund for Auditors and Sworn Auditors in the State of North Rhine-Westphalia (WPV)</p> <p><b>Michael Wolfram</b>, CAIA, FRM, Director, Bfinance Deutschland GmbH</p>
<b>4:30 pm - 5:15 pm</b>	INTREAL Forum (Cinema auditorium 4)	Liquid investments	<p><b>Debt investment in the real estate sector: direct lending, private debt, project bonds and corporate bonds</b></p> <p>Discussion led by <b>Professor Steffen Sebastian</b>, Professor of real estate financing, deputy managing director of the IREBS International Real Estate Business School</p> <p><b>Professor Michael Becken</b>, Managing director, Becken Invest GmbH</p> <p><b>Markus Drews</b>, Board of directors, DIOK Real Estate AG</p> <p><b>Francesco Fedele</b> CEO, BF.direkt AG</p> <p><b>Stefan Fromme</b>, Managing partner, VC Trade GmbH</p>
<b>4:30 pm - 5:15 pm</b>	The Property Post Forum (Cinema auditorium 3)	Structure and processes	<p><b>Global cities and investment hubs: US and Canada - which cities offer investment opportunities and for which usage categories?</b></p> <p>Keynote address and discussion led by <b>Thomas Gütle</b>, Managing director, Primera Advisors GmbH</p> <p><b>Thomas M. Baur</b>, Senior Director, GTIS Germany GmbH</p> <p><b>Ingo Bofinger</b>, Managing director, AFIAA Foundation for International Real Estate Investments</p> <p><b>Alexander Breddermann</b>, Vice President Fund Management, Northam Realty Advisors Limited</p> <p><b>Cord Ernst</b>, Managing Partner Capital Markets, Magnolia Capital</p> <p><b>Bernd Wegener</b>, FRICS</p>

## PROGRAMME

TIME	LOCATION	TOPIC	CONTENT
<b>FIFTH BLOCK OF FORUMS</b>			
<b>5:20 pm - 6:05 pm</b>	Warburg-HIH Invest Forum (Cinema auditorium 2)	Structure and processes	<p><b>Regulation and its impact: what consequences will increasing regulation have from a developer's, manager's and investor's perspective? Is there a correlation between regulation and rental prices?</b></p> <p>Discussion led by <b>Professor Ulrich Nack</b>, university lecturer in real estate management at the EBZ Business School in Bochum</p> <p>Keynote address: <b>Gero Gosslar</b>, Managing director, ZIA Zentraler Immobilien Ausschuss e.V</p> <p><b>Dr Anton Buchhart</b>, Senior head of department for investments, Barmenia Versicherungsgruppe</p> <p><b>Markus Königstein</b>, Head of real estate and infrastructure, R+V Versicherungsgruppe</p>
<b>5:20 pm - 6:05 pm</b>	INTREAL Forum (Cinema auditorium 4)	Liquid investments	<p><b>Real estate equities: investment in real estate shares and REITs - active management or passive index strategies?</b></p> <p>Keynote address and discussion led by <b>Stefan Stute</b>, MRICS, Director, Head of Investment Consulting, Wüest Partner Deutschland, W&amp;P Immobilienberatung GmbH</p> <p><b>Dr Stefan Krausch</b>, Head of Real Estate Portfolio Management, MEAG MUNICH ERGO AssetManagement GmbH</p> <p><b>Dr Foruhar Madjlessi</b>, Member of the Management Board, CFO, Instone Real Estate Group AG (Videostream)</p> <p><b>Claudia Reich Floyd</b>, Portfolio Manager Real Estate Securities, Timbercreek</p> <p><b>Niclas Karoff</b>, CEO, Hamborner REIT AG</p> <p><b>Manuel Philippe Wormer</b>, Investment Manager, Real Estate Investment Global, Bayerische Versorgungskammer (Videostream)</p>



## PROGRAMME

TIME	LOCATION	TOPIC	CONTENT
<b>5:20 pm - 6:05 pm</b>	The Property Post Forum (Cinema auditorium 3)	Structure and processes	<p><b>Cost transparency among asset managers: an international comparison of fee structures and placing</b></p> <p>Key note address and discussion led by <b>Dr Nikolai Dördrechter</b>, COO and Head of Private Markets XTP AG and <b>Michael Fuß</b>, Partner, XTP AG</p> <p><b>Christian Bock</b>, Member of the board, GEG German Estate Group AG (Videostream)</p> <p><b>Esther Heilmann</b>, Managing director, CBRE Capital Advisors GmbH</p> <p><b>Dr Helmut Matthey</b>, Management Board Spokesperson, Evangelische Ruhegehaltskasse in Darmstadt (ERK)</p> <p><b>Sascha Pinger</b>, Managing director, Versorgungswerk der Wirtschaftsprüfer und der vereidigten Buchprüfer im Lande Nordrhein-Westfalen (WPV)</p> <p><b>Frank Schäfer</b>, Managing director, Peakside Capital Advisors GmbH</p>

### END OF THE DAY

<b>6:05 pm</b>	Foyer Zoo Palast	Drinks
<b>7:15 pm</b>	1. Etage Waldorf Astoria, Restaurant, Foyer und Lang Bar	Dinner

**FRIDAY, 11 SEPTEMBER 2020**

TIME	LOCATION	TOPIC
<b>MORNING WORKOUT AT TIERGARTEN WITH SEBASTIAN FINIS</b>		
<b>7:00 am - 8:00 am</b>	Tiergarten	Fitness & Health Experte (sebastianfinis.com) Treffpunkt 7.00 Uhr vor dem Waldorf Astoria Hotel

<b>FOOD AND DRINKS/EXHIBITION</b>		
<b>from 9:00 am</b>	Waldorf Astoria, "Roca" Restaurant	Food and drink, Networking
<b>from 9:00 am</b>	Foyer Zoo Palast	Exhibition


## PROGRAMME

TIME	LOCATION	TOPIC	CONTENT
<b>SIXTH BLOCK OF FORUMS</b>			
<b>9:15 am - 10:05 am</b>	Warburg-HIH Invest Forum (Cinema auditorium 2)	Investment	<p><b>Early investment - make or buy: are early investments in project developments the best way to invest in existing projects?</b></p> <p>Discussion led by <b>Karsten Müller-Uthoff</b>, Management consultant  <b>Angelus Bernreuther</b>, Corporate Department/ Investor Relationship Management, Kaufland Dienstleistung GmbH &amp; Co. KG  <b>Markus Königstein</b>, Division manager Real Estate and Infrastructure, R+V Versicherungsgruppe  <b>Klaus Niewöhner-Pape</b>, Managing director, Industria Wohnen GmbH  <b>Jan Schlüter</b>, Director of the Real Estate Department, Nordrheinische Ärzteversorgung  <b>Eva Welzenbach</b>, Managing director, Advenis Real Estate Solutions GmbH</p>
<b>9:15 am - 10:05 am</b>	INTREAL Forum (Cinema auditorium 4)	Investment	<p><b>Manage to Core strategies - lifting hidden treasures with the right intuition</b></p> <p>Discussion led by <b>Professor Steffen Sebastian</b>, Professor of real estate financing, deputy managing director of the IREBS International Real Estate Business School</p> <p><b>Rainer Thaler</b>, Managing director, Investa Holding GmbH  <b>Dr Bernd Wieberneit</b>, Managing director, FOM Invest GmbH  <b>Immo von Homeyer</b>, Director Business Development, Art-Invest Real Estate Funds</p>

## PROGRAMME

TIME	LOCATION	TOPIC	CONTENT
<b>9:15 am - 10:05 am</b>	The Property Post Forum (Cinema auditorium 3)	Investment markets	<p><b>Global Cities and Investment Hubs: Asia-Pacific: which regions do European investors have on their watch list? - Australia, New Zealand, Japan and South Korea.</b></p> <p>Discussion led by <b>Ingo Bofinger</b>, Managing director, AFIAA Foundation for International Real Estate Investments</p> <p>Key note address: <b>Wolfgang Bernadzik</b>, Director, BlackRock Inc.</p> <p><b>Dr Leonard Meyer zu Brickwedde</b>, Founder Kenzo Capital Corporation</p> <p><b>Sascha Pinger</b>, Managing director, Versorgungswerk der Wirtschaftsprüfer und der vereidigten Buchprüfer im Lande Nordrhein-Westfalen (WPV)</p> <p><b>Bernd Wegener</b>, FRICS</p>
<b>SEVENTH BLOCK OF FORUMS</b>			
<b>10:10 am - 11:10 am</b>	Warburg-HIH Invest Forum (Cinema auditorium 2)	Investment	<p><b>The grand panel of economists: What effects can we expect from the COVID-19 crisis on a global and on a national level?</b></p> <p>Discussion led by: <b>Professor Dr Steffen Sebastian</b>, chair of real estate finance and deputy managing director of the IREBS Institute for Real Estate Management</p> <p>Key note address on economics: <b>Carsten Klude</b>, Chief Economist, M.M.Warburg &amp; CO</p> <p>Key note address on Real Estate Industry: <b>Professor Dr Felix Schindler</b>, Head of Research, Warburg-HIH Invest Real Estate GmbH</p> <p><b>Dr Jan Linsin</b>, Managing director, Head of Research, CBRE GmbH</p> <p><b>Andreas Trumpp</b>, MRICS, Head of Research Europe, Savills Investment Management GmbH</p>

TIME	LOCATION	TOPIC	CONTENT
10:10 am - 11:10 am	INTREAL Forum (Cinema auditorium 4)	Investment	<p><b>Real estate as a service: beds or stones - what matters when it comes to serviced or managed living investments. Are there differences between Germany, Europe and the UK? What future do opera- tor models have after the Corona crisis?</b></p> <p>Discussion led by <b>Christof Hardebusch</b>, Managing director, RUECKERCONSULT GmbH</p> <p>Keynote address 1: <b>The impact of the COVID- 19 crisis on the micro-living asset class. Amending use concepts, demand and requirements on the part of tenants and investors.</b></p> <p><b>Georg-Christian Rueb</b>, Senior Portfolio- manager Institutional Property Solutions, Union Investment Institutional Property GmbH (Videostream)</p> <p>Keynote address 2: <b>what do innovative housing concepts for senior citizens need to provide - concept, operations, future.</b></p> <p><b>Till Walter</b>, Head of Innovation Management &amp; Strategic Cooperations, Johanniter-Unfall-Hilfe e.V.</p> <p><b>subsequent discussion with</b> <b>Hannibal DuMont Schütte</b>, Managing direc- tor, Stayery, a brand of BD Apartments GmbH <b>Marc E.C. Gilbard</b>, Chief Executive Officer, Moorfield Group Limited / UK <b>Torsten Hollstein</b>, Managing director, CR Investment Management GmbH <b>Jan Winterhoff</b>, Director Hotel Development, GBI Holding AG <b>Björn Munte</b>, Development director Germany, The Collective (Living) GmbH</p>

TIME	LOCATION	TOPIC	CONTENT
10:10 am - 11:10 am	The Property Post Forum (Cinema auditorium 3)	Investment markets	<p><b>Start up your business:</b></p> <p><b>How do institutional investors find the right real estate asset manager for different usage types and investment regions? - From searching in long lists and short lists to the due diligence process.</b></p> <p><b>How should (new) asset managers prepare for addressing investors? - Prepare the selection of suitable investor target groups, personnel skills, organisational structure, marketing materials, speeches and the pitch book and answer the INREV/BVI questionnaires.</b></p> <p>Presented by LAGRANGE Financial Advisory GmbH </p> <p><b>Dr Sven Helmer</b>, MRICS, Managing Director, LAGRANGE Financial Advisory GmbH</p> <p><b>Monika Bednarz</b>, Director, LAGRANGE Financial Advisory GmbH</p>
<b>KICK-OFF PRESENTATION ESG-INVESTMENTS</b>			
11:15 am - 12:15 pm	Warburg-HIH Invest Forum (Cinema auditorium 2)	ESG	<p><b>ESG - a challenge for investors and managers: integrating ESG aspects into the investment process and risk management. Which of the European Commission's requirements need to be implemented for direct and indirect real estate investments, organisational structures for investors and managers and reporting?</b></p> <p>Introduction: <b>Frank Müller</b>, Rechtsanwalt, Partner, McDermott Will &amp; Emery Rechtsanwälte Steuerberater LLP</p> <p>Presentation: <b>Josien Piek</b>, Head of EMEA, GRESB BV</p> <p>Three questions to Josien Piek: <b>Frank Müller</b>, Rechtsanwalt, Partner, McDermott Will &amp; Emery Rechtsanwälte Steuerberater LLP</p> <p><b>Video transmission:</b> Foyer/forums (cinema halls)</p>

TIME	LOCATION	TOPIC	CONTENT
<b>EIGHTH BLOCK OF FORUMS</b>			
<b>12:20 pm - 1:15 pm</b>	Warburg-HIH Invest Forum (Cinema auditorium 2)	ESG	<p><b>ESG - the investor perspective: integrating ESG aspects into investment decisions and manager selection. How is manager commitment to ESG aspects measured?</b></p> <p>Discussion led by: <b>Karsten Jungk</b>, Managing director, Wüest Partner Deutschland, W&amp;P Immobilienberatung GmbH  <b>Christiane Eckert</b>, former Chief Portfolio Manager, ATP Real Estate (Videostream)  <b>Eberhard Haug</b>, Director Asset Management - Liquid Assets, Dept. Finance, M&amp;A and Investors Relations, EnBW Energie Baden-Württemberg AG  <b>Maria Leitzbach</b>, Head of department financial asset ZVK, SOKA-BAU Zusatzversorgungskasse des Baugewerbes AG  <b>Thomas Pfeiffer</b>, Managing Director, Norddeutsche Kirchliche Versorgungskasse für Pfarrer und Kirchenbeamte</p>
<b>12:20 pm - 1:15 pm</b>	INTREAL Forum (Cinema auditorium 4)	Structure and processes	<p><b>The heavyweights: What does the disclosure regulation mean for asset managers, institutional investors and investment structures</b></p> <p>Discussion led by <b>Goesta Ritschewald</b>, Management consultant  <b>Tobias Moroni</b>, Managing director, Institutional Investment Partners GmbH  <b>Michael Schneider</b>, Managing director, INTREAL International Real Estate Kapitalverwaltungsgesellschaft mbH  <b>Ludger Wibbeke</b>, Managing director, Hansainvest Hanseatische Investment-GmbH</p>
<b>12:20 pm - 2:15 pm</b>	The Property Post Forum (Cinema auditorium 3)	ESG	<p><b>Three 30-minute case examples of ESG investments</b></p> <p><b>ESG-compliant investment: BLOXHUB, Copenhagen, Denmark</b>  <b>Martine Reinhold Kildeby</b>, International network manager, Bloxhub / DK</p>

## PROGRAMME

TIME	LOCATION	TOPIC	CONTENT
			<p><b>Sustainable financing and investment alternative for real estate - aims, background information and case examples</b></p> <p><b>Jan Köpper</b>, Head of Head of Effect Transparency and Sustainability, GLS Gemeinschaftsbank eG</p> <p><b>An example of sustainable agro-forestry for institutional investors</b></p> <p><b>Richard Focken</b>, CEO and co-founder, 12Tree Finance GmbH</p>
<b>NINTH BLOCK OF FORUMS</b>			
<b>1:20 pm - 2:15 pm</b>	Warburg-HIH Invest Forum (Cinema auditorium 2)	ESG	<p><b>ESG - the manager perspective: how much progress have managers made in implementing ESG aspects? Fig leaf or convincing management approach? How do managers incorporate ESG aspects into corporate organisation?</b></p> <p>Discussion led by <b>Michael Denk</b>, Managing partner, Quadoro Investment GmbH</p> <p><b>Alexander Eggert</b>, Managing director, Warburg-HIH Invest Real Estate GmbH</p> <p><b>Xavier Jongen</b>, Managing director, Catella Residential Investment Management GmbH</p> <p><b>Claus P. Thomas</b>, CEO, BNP Paribas Real Estate Investment Management Germany GmbH</p> <p><b>Carolina von Groddeck</b>, Geschäftsführerin &amp; Head of Germany, Savills Fund Management GmbH</p>



## PROGRAMME

TIME	LOCATION	TOPIC	CONTENT
<b>1:20 pm - 2:15 pm</b>	INTREAL Forum (Cinema auditorium 4)	Investment markets	<p><b>Global cities and investment hubs: the new Silk Road - the impact on logistics markets, routes and properties</b></p> <p>Discussion led by <b>Andreas Trumpp</b>, Head of Research Europe, Savills Investment Management GmbH</p> <p><b>Dirk Bratschke</b>, Institutional Asset- and Portfolio Manager</p> <p><b>Jan Dietrich Hempel</b>, Managing director, Garbe Industrial Real Estate GmbH</p> <p><b>Joachim Kumme</b>, Head of department for own-account investments, Kreissparkasse Ludwigsburg</p> <p><b>Niklas Räther</b>, Director Investment, AEW Invest GmbH</p> <p><b>Peter Wenzel</b>, MRICS, Managing director, RLI Investors GmbH</p>
<b>CLOSE</b>			
<b>2:20 pm - 2:30 pm</b>	Warburg-HIH Invest Forum (Cinema auditorium 2)	INVEST-MENTExpo	<p><b>Recap and outlook</b></p> <p><b>Professor Steffen Sebastian</b>, Professor of real estate financing and deputy managing director of the IREBS International Real Estate Business School</p> <p><b>Thomas Rücker</b>, CEO of RUECKERCONSULT GmbH</p>
<b>2:30 pm</b>			
<b>END OF INVESTMENTexpo</b>			



### Contact

RUECKERCONSULT GmbH  
Thomas Rücker  
Wallstrasse 16  
10179 Berlin  
T +49 (0)30 28 44 987-3  
F +49 (0)30 28 44 987-99

### Registration

Sign up easily on our website at  
[www.investmentexpo.de](http://www.investmentexpo.de)  
or simply send us an e-mail to  
[investmentexpo@rueckerconsult.de](mailto:investmentexpo@rueckerconsult.de)

### For institutional investors (insurers, pension funds, pension schemes, own securities accounts)

We have complementary and, upon request, discounted  
tickets for institutional investors. If you are interested,  
please contact Thomas Rücker directly  
at [ruecker@rueckerconsult.de](mailto:ruecker@rueckerconsult.de)

### Venue

#### **Waldorf Astoria Berlin**

Hardenbergstraße 28  
10623 Berlin, Germany  
T +49 (0)30 814 000 - 2222  
[www.waldorfastoriaberlin.com](http://www.waldorfastoriaberlin.com)

#### **Zoo Palast Berlin**

Hardenbergstraße 29A  
10787 Berlin Charlottenburg, Germany  
T +49 (0)180 5222 966  
[www.zoopalast.premiumkino.de](http://www.zoopalast.premiumkino.de)

### Hotel allotment

Waldorf Astoria Berlin  
Booking code "INVESTMENTexpo"  
Deluxe room: single room EUR 345 including breakfast,  
Double room EUR 373 including breakfast